



Diamond Tub & Showers Spec Sheet

Model: SDS 603779

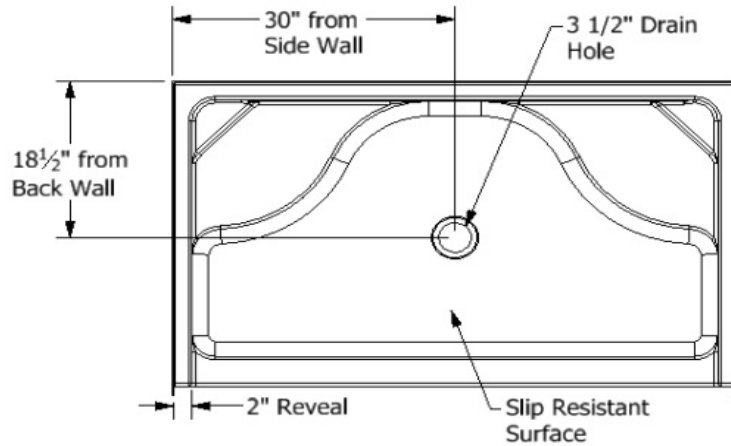
Description: One Piece Shower Unit with Double Seat

Specifications

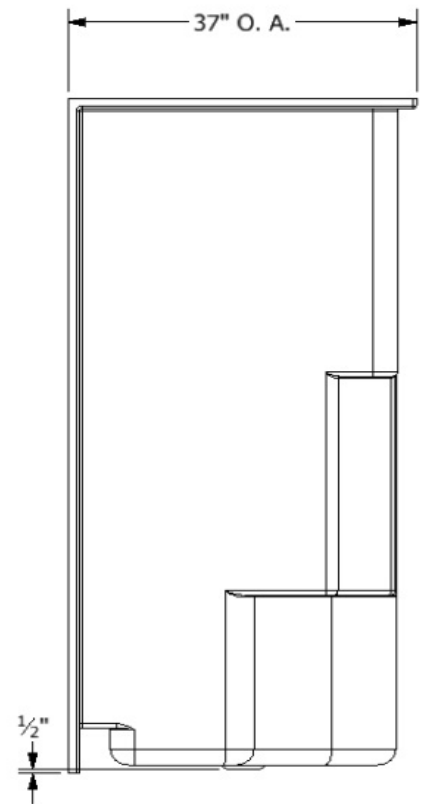
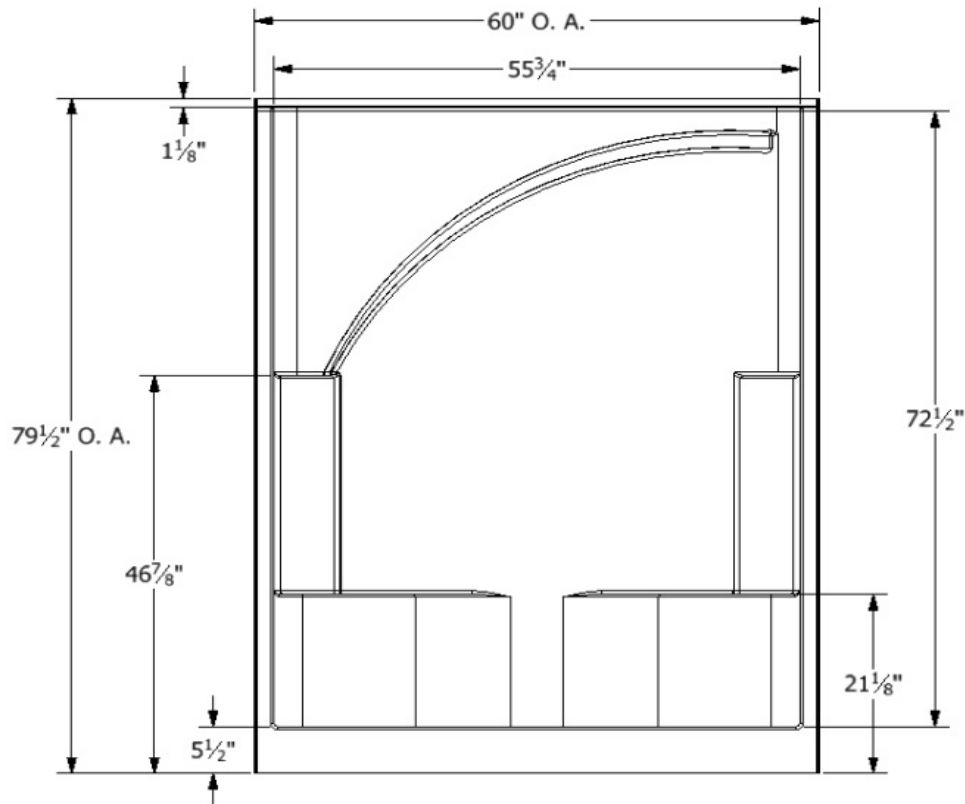
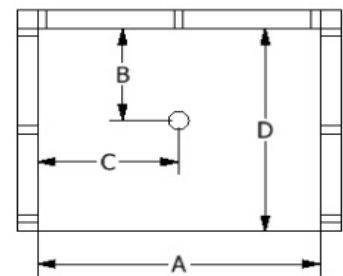
Model #	Material	Wall Finish	Pieces	Drain	Threshold Height	Net Weight Lbs.
SDS 603779	Fiberglass/Gelcoat	Smooth	1	C	5 1/2"	
Enclosure Opening						
Width	Height					
55 3/4"	72 1/2"					

Framing Dimensions

A	B	C	D
60"	18 1/2"	30"	37"



Framing Specifications



Certified to conform to HUD/UM73b, ANSI Z124.1, and ASTM E-162 Flame Spread Rating 200 or less and is under a program of factory inspection.

Manufactured by Frontline Mfg., Inc. Leesburg, IN



1/2/13